



CAT® APP/ MY.CAT.COM

ONLINE AND ON-THE-GO:

MANAGE YOUR EQUIPMENT YOUR WAY — WHENEVER, WHEREVER

My.Cat.Com and the Cat® App go hand in hand. Both save you time and effort, putting the right information at your fingertips, so you can cut your costs and your downtime. When you use one tool versus the other depends on your job, location and preferred way of working.

- **Connect everywhere with the Cat App.** Whether you're on site, at home or in transit from one job to another, use your phone or tablet for everything from checking equipment location to ordering parts to self-installing telematics devices. The Cat App is available in more than 20 languages.
- **Connect with your dealer 24/7 with My.Cat.Com.** Use your computer or tablet to manage your equipment – on your schedule. Access your asset data, including location, health, maintenance, performance and more. My.Cat.Com is available in more than 25 languages.

EQUIPMENT MANAGEMENT AT-A-GLANCE

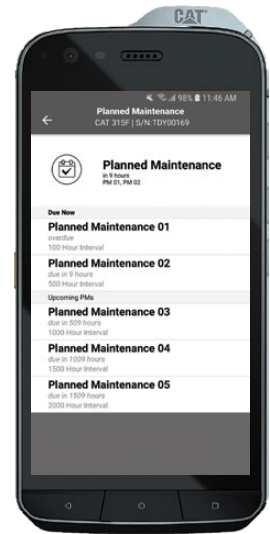
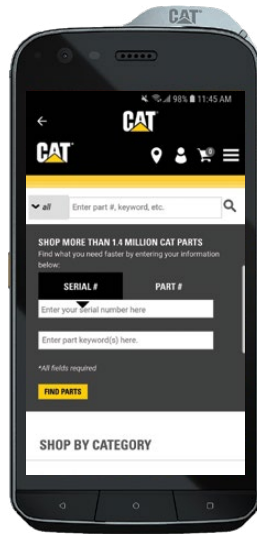
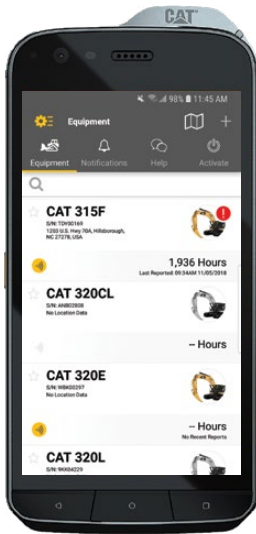
	Online: My.Cat.Com	On-the-Go: Cat App
Track hours, location, fuel use, health & utilization	X	X
Request parts or service	X	X
Receive health & maintenance alerts	X	X
Manage planned maintenance	X	X
Connect with your Cat dealer	X	X
Create & share tasks	X	X
Access Operation & Maintenance Manuals, warranties, work orders, service history & safety service letters	X	
Request Cat PL542 Product Link™ & self-install Cat Product Link devices		X
Use your phone as a digital key to start select Next Generation Cat machines		X



CAT® APP:

THE ANSWERS YOU NEED, RIGHT ON YOUR MOBILE DEVICE

Wherever you use your phone — around the jobsite, in your vehicle, even in your machine — you can use the Cat App. There's no need to sift through tons of data. Get answers to common questions and complete everyday tasks without turning on your computer or returning to the office.



Want to see your whole fleet without driving from site to site?

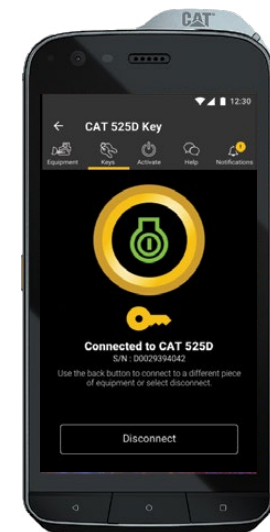
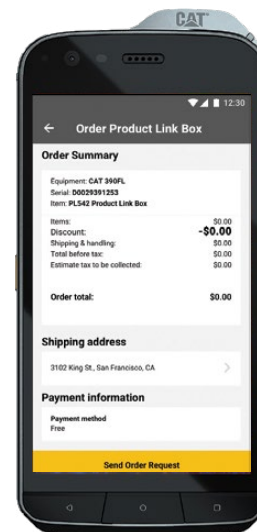
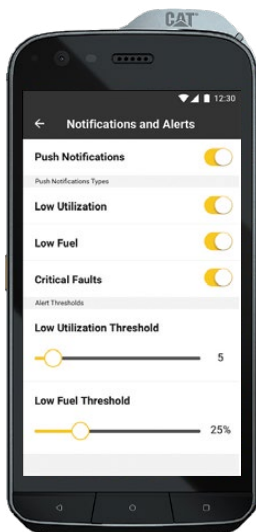
View your full asset list at a glance and check regularly updated hour, fuel level and utilization information. Use the Google maps feature to see the assets closest to your current location.

Don't have time to go to the office to order parts or request service?

Do it immediately on the app. Plus, when you request service, auto-filled location and machine information may save you the time and effort of typing — ask your Cat dealer if this feature is available in your region.

Wish you could plan service when it doesn't impact production?

Get notifications about upcoming indicators based on machine operating hours so you schedule services proactively.



Overwhelmed by notifications?

Customize what fault codes, alerts or machine operating conditions you want to know about, even if you don't check the app every day.

Want to connect machines to telematics when it fits into your schedule?

Request and self-install PL542 Product Link boxes to get connected and frequently receive data insights.

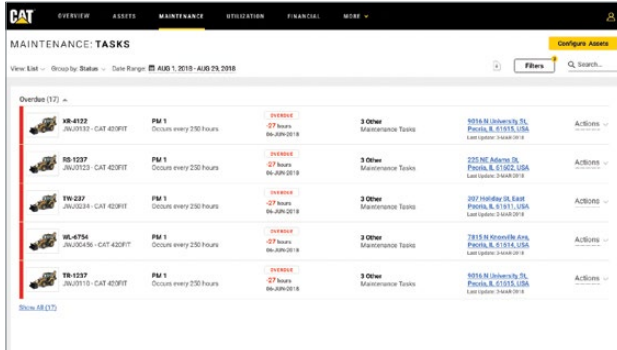
Tired of losing or trying to find the right key?

Using the keyless start feature, you can start select Next Generation Cat machines from the app.

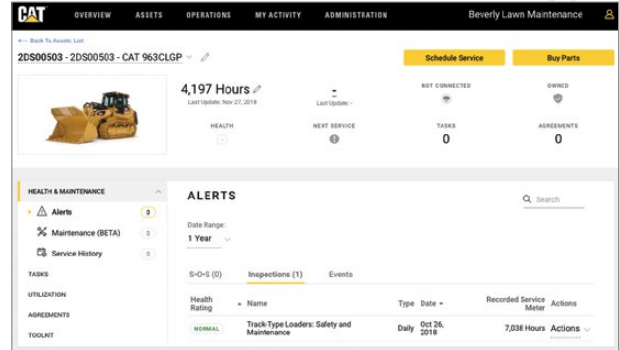
MY.CAT.COM:

AN ONLINE HUB FOR YOUR EQUIPMENT INFORMATION

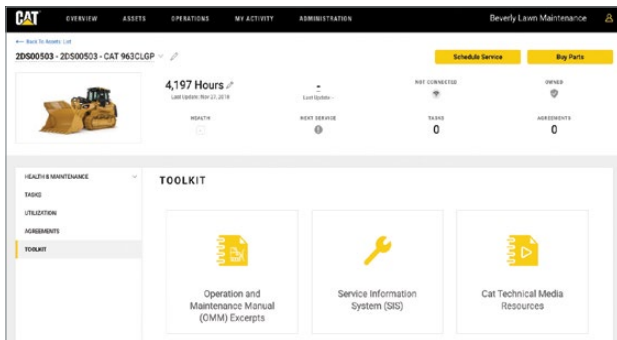
When you're online, My.Cat.Com makes it easy to track equipment, take action on alerts, order parts, schedule service or find more details about your assets. My.Cat.Com is the one place to access ALL your equipment information with a single login.



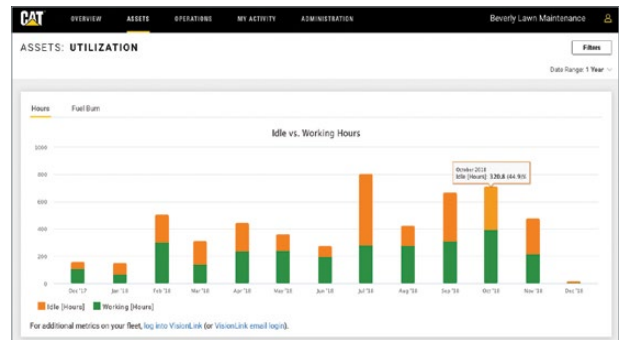
Looking for an easy way to keep maintenance on schedule? Share maintenance tasks with your team, mark work complete and adjust future schedules if needed.



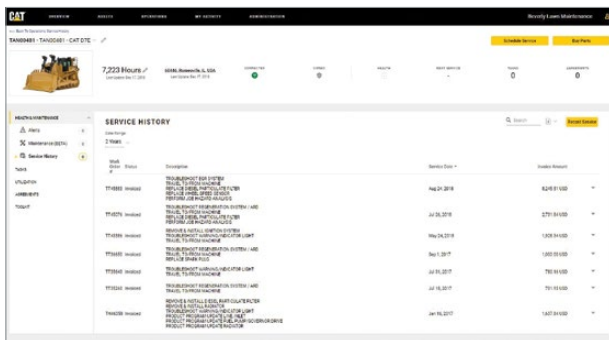
Interested in the condition of individual machines? Review your S•O•SSM Services fluid analysis results or Cat Inspect reports to identify problems before they become failures.



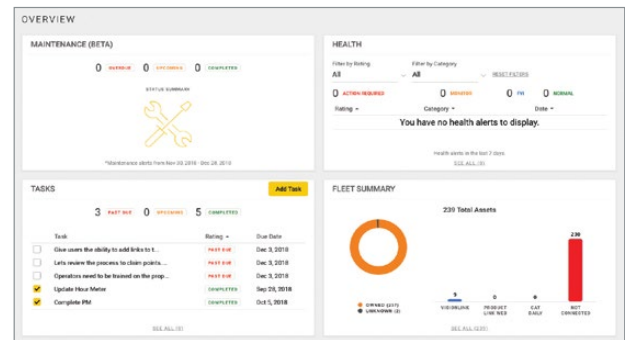
Trouble finding your paper records or manuals? Access Operational & Maintenance Manuals, support agreements, service letters, warranty information, invoices and more.



Interested in how the performance of different machines or jobsites compares? Run utilization and benchmarking reports to determine if you need to make adjustments to your fleet or operations.



Ready to sell a piece of equipment? Download a complete work order and service history to command a higher resale price.



Want to customize how you see your information? Set up your home page to get to your most important or most used tools quickly. Choose to view your assets in a table, in a grid or on a map — select an individual asset to see all its details.



READY TO GET STARTED?

CREATE YOUR MY.CAT.COM ACCOUNT

If you're not already registered, go to My.Cat.Com and enter some basic information about your company and your equipment. As soon as your Cat dealer verifies your account, you'll be able to access your equipment data.

DOWNLOAD THE CAT APP

Visit the Apple App Store or the Google Play Store to download the app and then log in with your Caterpillar account. Click "Get Started" to sign up and enter equipment data into the app. Or, easily view and upload data on My.Cat.Com.

Questions? Caterpillar and your Cat dealer are here to help you get registered and answer any questions you have about how to use My.Cat.Com and the Cat App to simplify equipment management. You'll also find more details here:

[MY.CAT.COM](#)

[GOOGLE PLAY](#)

[ITUNES](#)

LET'S DO THE WORK.™

PEDJ0425 © 2019 Caterpillar. All Rights Reserved. CAT, CATERPILLAR, LET'S DO THE WORK, their respective logos, "Caterpillar Yellow", the "Power Edge" and Cat "Modern Hex" trade dress as well as corporate and product identity used herein, are trademarks of Caterpillar and may not be used without permission.

